

ALTO 1 SOLO

43 C-9 C7(#9)

47 F-7 F#Δ7 G7

51 C-7 G7 G+7

55 C-9 C7(#9)

59 F-7 F#Δ7 G7

63 C-7 G7 G+7

67 C-9 REPEAT SOLO OVER PEDAL UNTIL CUE

69 C-9 C7(#9)

73 F-7 F#Δ7 G7

77 C-7 G7 G+7

TENOR SOLO

81 C-9 C7(#9)

85 F-7 F#Δ7 G7

89 C-7 G7 G+7

93 C-9 C7(#9)

97 F-7 F#Δ7 G7

101 C-7 G7 G+7

105 C-9 REPEAT SOLO OVER PEDAL UNTIL CUE

107 C-9 C7(#9)

111 F-7 F#Δ7 G7

115 C-7 G7 G+7

RHYTHM SECTION

MARC/CHUCK/AARON/MAC

Composition in Blue, Yellow, and Red

Yellow

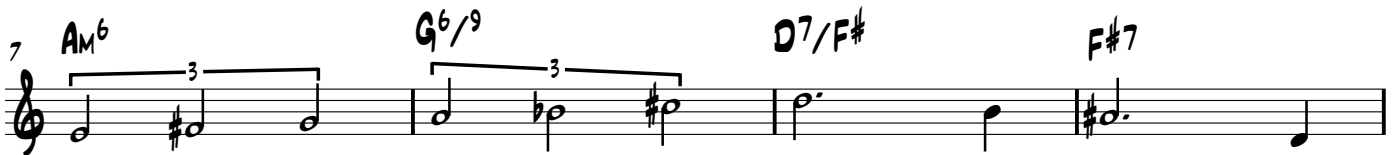
INTRO CLASSICAL GUITAR SOLO VAMP UNTIL CUE

MARC LEMAY

SLOW SWING ♩ = 75



THEME GUITAR MELODY, STICK COMP ONLY



STICK SOLO GUITAR COMP, ENTER BOWED BASS AND DRUMS



ACCELERANDO 1

ENTER CLARINET AND TENOR. GUITAR SOLO. STICK COMP.
REPEAT AND ACCELERANDO SLOWLY UNTIL CUE. THEN GO TO RECOVERY MEASURE

RECOVERY ♩ = 75

34 **B_M11 (ALT)** **B^b+7 (ALT)** **B_M11**

THEME

CLARINET AND TENOR THEME, FULL BAND

37 **B_M11** **B^b+7** **A13** **B^b6**

41 **A_M6** **G^b/9** **D7/F#** **F#7**

45 **B^o7** **B^b+7** **A_M7** **E^bo7**

49 **E_M7** **F_M7** **F#7(b5)**

BASS SOLO

ARCO

52 **B_M11** **B^b+7** **A13** **B^b6**

56 **A_M6** **G^b/9** **D7/F#** **F#7**

60 **B^o7** **B^b+7** **A_M7** **E^bo7**

64 **E_M7** **F_M7** **F#7(b5)**

ACCELERANDO 2

ENTER CLARINET AND TENOR. ALTERNATE PLAYING THE WRITTEN NOTES WITH IMPROVISATIONS
REPEAT AND ACCELERANDO SLOWLY UNTIL CUE, THEN GO TO CODA

68 B_M^{11} (ALT) B^b+7 (ALT)

CLARINET
TENOR

CODA ♩ = 75

70 B_M^{11}

DRUM SOLO CONTINUE FREE IMPROV AND TRANSITION TO "RED"

74

RHYTHM SECTION
CHUCK/AARON/MAC
CHUCK ON PIANO

Composition in Blue, Yellow, and Red

Red

MARC LEMAY

ALTO 2 SOLO A

STRAIGHT, UP ♩ = 220

1 **E_M11** **FΔ7(♯11)** % % % %
6 **E_M11** **FΔ7(♯11)** % % **F[♯]M6**
11 **G_M7** **A_M11** **G_M7** **A_M11** **E^b9**
15 **E_M11** **FΔ7(♯11)** % %
18 **E_M11** **FΔ7(♯11)** % %

THEME / ALTO 2 SOLO B

*ALTO 1 AND TENOR PLAY THEME IN OCTAVES,
ALTO 2 CONTINUES SOLO*

21 **E_M11** **FΔ7(♯11)** % % % %
26 **E_M11** **FΔ7(♯11)** % % **F[♯]M6**
31 **G_M7** **A_M11** **G_M7** **A_M11** **E^b9**
35 **E_M11** **FΔ7(♯11)** % % % % %

TENOR SOLO A

41 E_M^{11} $F\Delta 7(\#11)$ // // //

46 E_M^{11} $F\Delta 7(\#11)$ // // $F\#_M^6$

51 G_M^7 A_M^{11} G_M^7 A_M^{11} E^b_9

55 E_M^{11} $F\Delta 7(\#11)$ // //

58 E_M^{11} $F\Delta 7(\#11)$ // //

TENOR SOLO B

*BASS DRUM DOWNBEATS AND HANDCLAPS ONLY;
TENOR CONTINUES IN FREE IMPROV*

61 NC

DRUMS

69

THEME 2 / ALTO 1 SOLO A

ALTO 2 AND TENOR PLAY THEME IN OCTAVES;
ALTO 1 SOLOS

FASTER. SWING ♩ = 250

77 **EM¹¹** **FΔ7(♯11)** %

ALTO 2
TENOR

87 **EM¹¹** **FΔ7(♯11)** % **F[♯]M⁶**

97 **G^M7** **AM¹¹** **G^M7** **AM¹¹** **E^b9**

105 **EM¹¹** **FΔ7(♯11)** %

111 **EM¹¹** **FΔ7(♯11)** %

CODA ALTOS AND TENOR HAVE 3 OPTIONS: PLAY THE TOP VOICE BELOW, THE BOTTOM VOICE BELOW (IN ANY OCTAVE), OR IMPROVISE;
ALTO 1 BEGINS ALONE WITH THE TOP VOICE: RHYTHM SECTION STEADY ACCELERANDO UNTIL CUE.
BEGIN VERY SLOWLY. SWING ♩ = 60

117 **EM¹¹** **FΔ7(♯11)**

TAG FERMATAS CUED

119 **EM¹¹** **E^b11**

ALTO 1
ALTO 2
TENOR